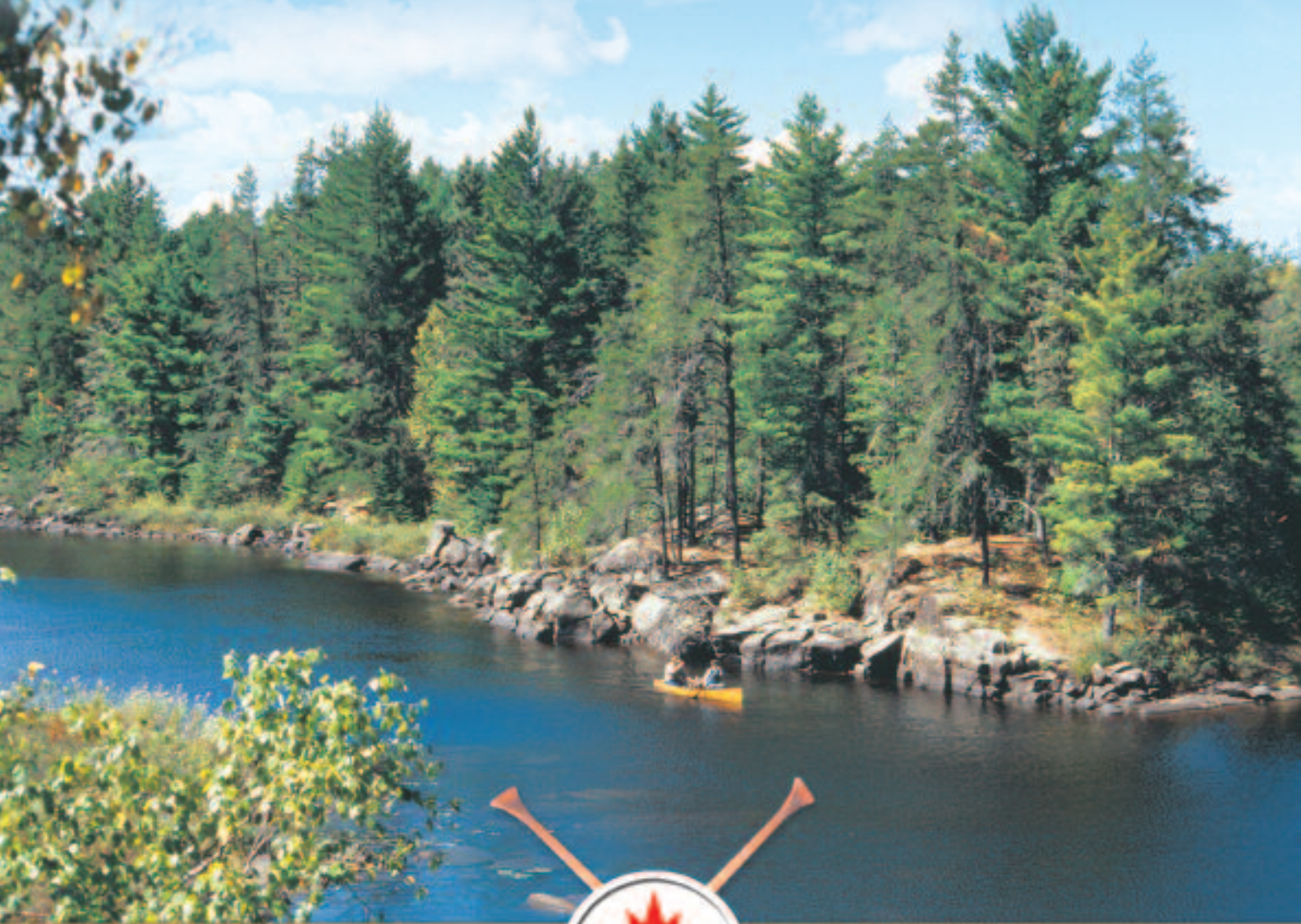


ELY, MINNESOTA



**CANADIAN BORDER**  
*Canoe Trip.com* **OUTFITTERS**



**WILDERNESS CANOE TRIPS IN THE BWCA & QUETICO**

**The Only Thing We Overlook is Moose Lake!**



# WE ARE THE Canoe Country

## Welcome to **Canadian Border Outfitters!** *Let us introduce ourselves*

Canadian Border Outfitters (CBO) is located on beautiful Moose Lake, only 19 miles east of Ely, Minnesota, on the very edge of the famed Boundary Waters Canoe Area Wilderness and Quetico Provincial Park.

We specialize in canoe trip outfitting with a professional, personal touch. Our expertise in fishing and exploring the portage trails and waterways we call our backyard is unmatched. It's our first-class friendly service, our helpful veteran crew, and our constant attention to the details that sets us apart.

We enjoy a picturesque Northwoods setting as our base of operations. Ours is the perfect place to ease the transition from hectic modern life to the peace and tranquility of the wilderness. Come and enjoy our expansive grounds, private overnight lodging, lake-side Cookshack, and friendly "Store in the Woods."

CBO is the ultimate wilderness experience—from the moment you arrive at our outpost to the moment you depart for home. If you're looking for a real getaway, this is it! We welcome you to Canadian Border Outfitters.



**14635 Canadian Border Rd.**

**ELY, MINNESOTA 55731**

**800-247-7530**

**[www.canoetrip.com](http://www.canoetrip.com)**

**email: [cbo@canoetrip.com](mailto:cbo@canoetrip.com)**

**The only thing we overlook is Moose Lake!**

# WILDERNESS CANOE TRIPS

*With over 2 million acres of protected wilderness and more than 2000 lakes and rivers to explore, canoe country is the perfect destination for adventure, solitude, inspiration, nature studies and fishing.*

The Boundary Waters Canoe Area Wilderness of northeastern Minnesota is more than one million acres of pristine lakes, pine-covered forests and unsurpassed natural beauty. Together with Canada's Quetico Provincial Park just over the border, there are more than 2,000 lakes interconnected by streams, rivers and portage trails. And it's all just waiting to be explored.

Throughout history, people have traveled the scenic waterways of the border region. Ojibway and Sioux Indians first ventured along these routes in birchbark canoes, followed by voyageurs and trappers in search of new territories.

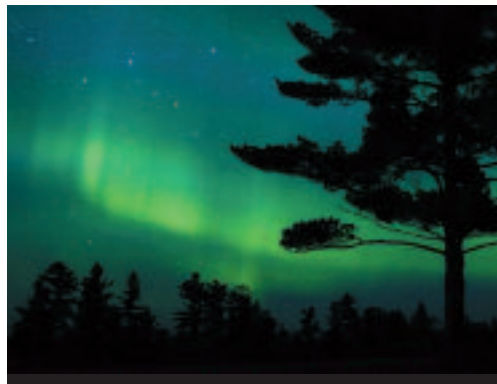
Today, the area has been set aside as a protected wilderness area. There are few signs of civi-

lization here. These unspoiled waterways have remained unchanged for centuries and provide today's visitor the same adventures our ancestors experienced.

Wildlife such as moose, deer, bald eagles, beavers and black bears abound. The cry of the loon and howl of the timber wolf make your Northwoods nights special occasions.

Canoe country is an angler's paradise. The crystal clear lakes teem with smallmouth bass, walleye, northern pike and lake trout, as well as crappies, bluegill, stream trout and more.

Here you'll find the simple pleasures of life the most rewarding: freshly caught fish sizzling on the griddle, scenic vistas of unparalleled beauty, clean air and pure waters to clear the mind and refresh the soul.



**Relax. Refresh. Reconnect.**  
*It's what a vacation is all about.*

## Five Easy Steps to Get Started

### 1. ESTIMATE GROUP SIZE

Get a "best guess" estimate of group size. This can be adjusted during the planning process but it's critical to secure the proper number of permits early (one travel permit for each 9 people). We also need a list of most-likely "party leaders" to be named on the permit(s).

### 2. SET PREFERRED DATE

Set a preferred entry date (the day you go "on the water") and any alternate dates in case the first choice isn't available. Once the permit is issued, the entry date is set in concrete. Any change will require a brand new permit (if available).

### 3. FIGURE NUMBER OF DAYS

Decide the number of days you'll be spending on the water. This is flexible;

your permit does not require a specified exit date.

### 4. DECIDE U.S. OR CANADA

Also pick a preferred entry point - the starting place for your canoe trip. Here's where we can really help. We'll explain the various options and best routes to meet your needs, interests, and abilities. Large groups must separate into subgroups of no more than 9 people. Since each subgroup travels and camps separately in the wilderness, each subgroup may choose its own entry point and park preference.

### 5. CHOOSE A PACKAGE

Determine which package (and any optional services) best fits your group. If you have any special requests, we'll be

happy to work up a special package and give you a price quote.

### WE'LL TAKE IT FROM THERE!

We'll be working with you right up to your arrival at CBO to make sure all the details have been worked out and adjustments made as needed. We'll do everything possible to make sure your group's wilderness canoe trip is an enjoyable and memorable experience.



# EXPEDITION OUTFITTING

*There are hundreds of lakes waiting to be explored out there... waters seldom fished, wildlife in unspoiled settings, and vistas of unparalleled beauty just across the next portage.*

If you're planning a travel-type expedition far and deep into the interior of the parks, we'll help you travel faster and lighter with the least amount of effort and impact.

Canadian Border Outfitters proudly offers you only the best in our **Kevlar Expedition Outfitting Package**. You won't find a package anywhere in the industry exceeding this one.

Kevlar Expedition means highest quality gear with minimum weight and bulk. Our Elite menu is one of the most exten-

sive you'll find anywhere. And we offer the newest high-tech gear on the market...like the Spot Satellite Tracker.

We customize each trip route so you'll have an adventure that matches your crew's special needs and expectations.



Your package includes all maps needed for your trip and our knowledgeable routers will spend "quality time" with your crew discussing campsites, portages, fishing conditions, scenic points of interest, and all the fine-point details.

## Expedition Package Includes:

### KEVLAR CANOE

Your choice of Bell, Wenonah or Souris River (tandem, 3-person, 4-person and solo models), complete with paddler's-design life jackets and lightweight wood or aluminum paddles with bent or straight shaft.

### ROUTING SERVICE

One set of detailed maps in a waterproof Sealine map case plus detailed trip routing service.

### CANOE SEAT & BAG

Crazy Creek canoe seat backrests (good for around camp, too) plus Kondos under-seat canoe bags (keeps small items accessible).

### TENTS

Spacious ultra-lightweight dome-style tents (easy set-up) with rain fly.

### PACKS & SACKS

Granite Gear and Kondos Packs: #3.5 & #4 for gear, food & personal items (padded shoulder and hip straps for carrying ease) plus dry bags for clothing and personal items.

### SLEEPING BAGS & MATTRESSES

Top-of-the-line Alps & Slumberjack sleeping bags in compression sacks (less bulk), Thermarest self-inflating mattresses and camp pillows.

### "ELITE" EXPEDITION MENU

Exceptional selection of gourmet-quality fresh and freeze-dried foods packed to your personal specifications; you won't find a menu anywhere to match this one!

### COOK KIT & STOVE

Durable lightweight cook kit (pots, pans, fry pan, griddle, coffeepot), lexan dinner service, cooking and eating utensils stored in a utensil wrap. Primus super light stove and fuel.

### OTHER "YOUR CHOICE" GEAR

Our Expedition package also offers lots of miscellaneous items to customize your gear pack, including:

- Silva compass
- Primus or Coleman lantern
- Gerber hatchet with sheath
- Sawvivor folding saw
- Water purification system
- Solar shower
- U-Dig-It shovel (for Quetico trips)
- Fire grate (for Quetico trips)
- Lightweight nylon dining fly or lean-to
- Minnow/leech bucket
- Rod holders and anchor bags
- Basic first aid kit
- Rain poncho
- Personal water bottles

### HI-TECH ACCESSORY

The Spot Satellite Tracker is a state-of-the-industry hi-tech communication and navigation aid which charts your travels via GPS, sends waypoints to friends and co-workers via Google Maps, and alerts emergency responders to your pinpointed location for needed assistance.

# OUR IDEA OF A Traffic Jam



## Expedition Package Rates

	2-4 People	5-7 People	8+ People
<b>7 DAYS</b>	737	673	547
Conservation Club	663	605	492
Con.Club/Repeat Guest	589	539	438
Super Saver	552	504	411
Spring/Fall	589	539	438
<b>6 DAYS</b>	672	599	525
Conservation Club	604	539	472
Con.Club/Repeat Guest	538	480	421
Super Saver	504	449	394
Spring/Fall	538	480	421
<b>5 DAYS</b>	560	509	459
Conservation Club	504	459	413
Con.Club/Repeat Guest	448	407	367
Spring/Fall	448	407	367
<b>4 DAYS</b>	480	425	375
Conservation Club	432	383	338
Con.Club/Repeat Guest	384	339	300
Spring/Fall	384	339	300
<b>3 DAYS</b>	359	327	294
Conservation Club	323	294	264
Con.Club/Repeat Guest	288	262	235
Super Saver	269	246	220
Spring/Fall	288	262	235
<b>Extra Days</b>	65	55	45

Deduct \$4 per day if you bring your own sleeping bag.

**FAMILY "BUDGETEER" PRICING** Exceptional Value! To make it affordable for you to build special memories with your kids, we have super rates for "youth". At CBO, youth under the age of 18 receive a 50% discount over the adult rate. Plus... all preschoolers are FREE of charge.

**CBO's CONSERVATION CLUB** CBO is an acknowledged area leader in the effort to preserve and protect the precious and fragile ecosystem in the BWCA and Quetico Parks. And we have a proud, successful tradition of encouraging our guests to partner with us in these important conservation efforts. We invite you to save 10% by joining CBO's "Conservation Club" by pledging to:

- Travel INTO the parks – plan on paddling at least one day beyond your entry point to camp on our more remote wilderness lakes.
- Observe "Leave No Trace" camping ethics.
- Drown all campfires thoroughly before leaving camp.
- Practice catch and release fishing – keep no more than two smaller fish per person each day for eating; all others should be released.

**REPEAT GUESTS** A special "thank you" to our many repeat guests! You and your party will receive an additional 10% off our Conservation Club rates!

### MID-WEEK "SUPER SAVER"

Value prices! To take advantage of these great rates (a 25% discount), you need to start AND end your trip on a Tuesday, Wednesday, or Thursday. Not only do you save money, but it's also much easier to obtain a travel permit for these entry days. No additional discounts apply.

**SPRING AND FALL SPECIAL** Take advantage of our special 20% discounted rate if your trip begins BEFORE June 13 or AFTER August 14. No additional discounts apply.

**SOLO CANOE TRIPS** Packages can be adjusted for solo trips. Add 25% to base rate for 2-4 persons.

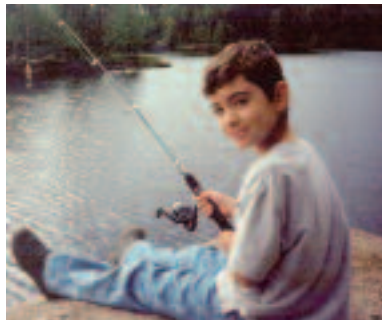
# EXPLORER OUTFITTING

*Paddle and portage through a wilderness nearly unchanged since the days of the voyageurs. Camp in a wonderland of rocky, pine-covered islands and interconnected glacier-carved lakes.*

There are hundreds of lakes waiting to be explored out there... waters seldom fished, wildlife in unspoiled settings, and vistas of unparalleled beauty just across the next portage.

If you're interested in traveling far and deep into the backcountry, CBO's **EXPLORER PACKAGE** is well-suited to extensive travel plans... fast and light.

If you're interested in a more moderately-paced travel and sampling some fun wilderness activities... such as sight-seeing, exploring, fishing, enjoying some "lay-over" camp days... we'll tailor our canoes and gear to match your interests.



Or maybe simply relaxing is your highest priority and traveling only a portage or two into the park to find that "one perfect campsite"... no moving your camp every day... sounds perfect. If you plan to spend your time with a day-pack, camera, or fishing pole in hand, you might want to take some of our "Base Camp" items along. These are the amenities that would make your campsite a true "home away from home" and we have it all to make your Northwoods base camp extra-comfortable. And (best of all) at CBO there is no extra charge!

## Explorer Package Includes:

### CANOE

- Your choice of Kevlar (Bell, Wenonah Souris River) or aluminum (Alumacraft, Grumman)

### PADDLES & LIFE JACKETS

- Lightweight life jackets
- Carlisle straight or bent shaft paddles

### ROUTING SERVICE

- One set of travel maps and detailed routing services

### TENTS

- Lightweight tents (easy set-up) with rain fly

### PACKS & SACKS

- Kondos Packs #3.5 & #4 packs with padded shoulder straps

### SLEEPING BAGS & MATTRESSES

- Slumberjack sleeping bags w/ stuff sack
- Thermarest self-inflating mattresses

### EXPLORER MENU

- Wide selection of fresh and freeze-dried foods packed to your personal tastes

### COOK KIT & STOVE

- Nesting pots, coffeepot, teflon fry pan, griddle, lexan dinnerware, cooking & eating utensils
- Peak One or Coleman double burner stove with fuel

### OTHER GEAR

- Folding saw & axe
- Camp shovels (for Quetico trips)
- Water purification tablets
- Lightweight dining fly
- Bear rope pulley system

### BASE CAMP EXTRAS

- Lantern
- Screen tent
- Cots
- Folding chairs
- Folding table
- Solar shower
- Fish cleaning board
- Rod holders
- Bait container
- Anchor bag

# ESCAPE TO THE Wilderness...

## Explorer Package Rates

	2-4 People	5-7 People	8+ People
<b>7 DAYS</b>	<b>599</b>	<b>547</b>	<b>445</b>
Conservation Club	539	492	400
Con.Club/Repeat Guest	479	438	356
Super Saver	449	410	334
Spring/Fall	479	438	356
<b>6 DAYS</b>	<b>546</b>	<b>487</b>	<b>427</b>
Conservation Club	491	438	384
Con.Club/Repeat Guest	437	390	342
Super Saver	410	365	320
Spring/Fall	437	390	342
<b>5 DAYS</b>	<b>455</b>	<b>414</b>	<b>373</b>
Conservation Club	410	373	336
Con.Club/Repeat Guest	364	331	298
Spring/Fall	364	331	298
<b>4 DAYS</b>	<b>390</b>	<b>345</b>	<b>305</b>
Conservation Club	351	311	275
Con.Club/Repeat Guest	312	276	244
Spring/Fall	312	276	244
<b>3 DAYS</b>	<b>292</b>	<b>266</b>	<b>239</b>
Conservation Club	263	239	215
Con.Club/Repeat Guest	234	213	191
Super Saver	219	200	179
Spring/Fall	234	213	191
<b>Extra Days</b>	<b>50</b>	<b>50</b>	<b>50</b>

*Deduct \$3 per day if you bring your own sleeping bag.*

**FAMILY "BUDGETEER" PRICING** Exceptional Value! To make it affordable for you to build special memories with your kids, we have super rates for "youth". At CBO, youth under the age of 18 receive a 50% discount over the adult rate. Plus... all preschoolers are FREE of charge.

**CBO's CONSERVATION CLUB** CBO is an acknowledged area leader in the effort to preserve and protect the precious and fragile ecosystem in the BWCA and Quetico Parks. And we have a proud, successful tradition of encouraging our guests to partner with us in these important conservation efforts. We invite you to save 10% by joining CBO's "Conservation Club" by pledging to:

- Travel INTO the parks – plan on paddling at least one day beyond your entry point to camp on our more remote wilderness lakes.
- Observe "Leave No Trace" camping ethics.
- Drown all campfires thoroughly before leaving camp.
- Practice catch and release fishing – keep no more than two smaller fish per person each day for eating; all others should be released.

**REPEAT GUESTS** A special "thank you" to our many repeat guests! You and your party will receive an additional 10% off our Conservation Club rates!

### MID-WEEK "SUPER SAVER"

Value prices! To take advantage of these great rates (a 25% discount), you need to start AND end your trip on a Tuesday, Wednesday, or Thursday. Not only do you save money, but it's also much easier to obtain a travel permit for these entry days. No additional discounts apply.

**SPRING AND FALL SPECIAL** Take advantage of our special 20% discounted rate if your trip begins BEFORE June 13 or AFTER August 14. No additional discounts apply.

**SOLO CANOE TRIPS** Packages can be adjusted for solo trips. Add 25% to base rate for 2-4 persons.



# START A Tradition.

## FLY-IN WILDERNESS Adventures

A bush plane ride to a remote Quetico entry point will really add some excitement to your next canoe trip. You'll discover the breath-taking beauty of canoe country... spotting rock faces and beautiful waterfalls as you soar over the lakes you'll soon be paddling. You can explore your way back to our base or stay on some of the most remote lakes in Quetico and have the plane come back to pick you up.

Call us for information and prices on fly-in rates to:

#23 Mack (Clay) Lake

#32 Beaverhouse-Quetico Lake

#42 Lac La Croix-Maligne River

#31 Beaverhouse-Cirrus Lake

#21 Batchewaung (Nym) Lake

#44 Lac La Croix-Bottle River



### **BEST OF ALL:**

We'll help out your budget... we'll include our **Super-Saver** rates (25% off our base rate) for "Complete Outfitting Packages" when experiencing a Fly-in Trip.



800-247-7530 | [www.canoetrip.com](http://www.canoetrip.com) | [cbo@canoetrip.com](mailto:cbo@canoetrip.com)

# PARTIAL OUTFITTING

Sometimes you just need an item or two to make your trip complete. We have the canoes, camping equipment and miscellaneous gear to ensure your trip runs as smoothly as possible.

## CANOE Rate Per Day

	Base Rate	Conservation Club	Spring & Fall
Kevlar Bell Northwind (17.5', 41#)	\$42	\$40	\$34
Kevlar Wenonah Spirit II (17', 44#)	\$40	\$38	\$32
Kevlar Wenonah Boundary Waters (17', 43#)	\$40	\$38	\$32
Kevlar Wenonah Champlain (18', 46#)	\$42	\$40	\$34
Kevlar Bell Northwoods (18.5', 43#)	\$44	\$42	\$36
Kevlar Wenonah MN II (18.5', 43#)	\$42	\$40	\$34
Kevlar Souris River Quetico (18.5', 48#)	\$44	\$42	\$36
Kevlar Wenonah Seneca -3 person (19.5', 55#)	\$45	\$43	\$36
Kevlar Wenonah MN III-3 person (20', 53#)	\$45	\$43	\$36
Kevlar Wenonah MN IV-4 person (23', 64#)	\$47	\$45	\$38
Kevlar Bell Magic-Solo (16', 34#)	\$38	\$36	\$30
Kevlar Wenonah Prism-Solo (16.5', 37#)	\$36	\$34	\$29
Royalex Old Town Penobscot (17', 64#)	\$26	\$25	\$21
Royalex Old Town XL Tripper (20', 105#)	\$27	\$26	\$22
Aluminum Marathon/Grumman (17', 64#)	\$25	\$24	\$20
Aluminum Marathon/Grumman (18', 72#)	\$25	\$24	\$20
Aluminum Alumacraft CL 3 seats (18.5', 71#)	\$27	\$26	\$22
Kayak Current Designs Storm (17', 64#)	\$23	\$22	\$19
Kayak Current Designs Squall (16.5', 61#)	\$23	\$22	\$19

Repeat guests receive an additional 5% discount from conservation club rates. All canoe rentals include paddles, life vests, portage yoke & routing assistance.

## MISCELLANEOUS (no discounts apply)

- Expedition Food (includes pack & liner) \$45 per person per day
- Explorer Food (includes pack & liner) \$35 per person per day
- Food pack liner \$3 each
- Showers w/towels \$5 per person
- Satellite Phone \$25 per day, \$100 per week plus \$3/minute usage
- Spot Satellite Tracker \$12 per day, \$72 per week
- GPS \$15 per day, \$90 per week
- Trip routing FREE w/canoe rental; others \$25 per trip



## ULTRA-LIGHT CAMPING GEAR

	Per Day
Sleeping bag (Hollofil)	6.00
Thermarest self-inflating mattress (1" ultralight)	5.00
Thermarest self-inflating mattress (1" standard)	4.50
Thermarest self-inflating mattress (2" basecamp)	4.75
Coleman stove, two-burner (1 tank of fuel)	5.50
Peak One stove, one-burner (1 tank of fuel)	4.50
Primus lightweight stove (1 canister of fuel)	5.50
Duluth Pack, cordura #3.5 with padded straps	5.00
Duluth Pack, cordura #4 with padded straps	5.25
Bear-resistant food barrel	6.75
Thwart/Under-seat Bag	3.00
Crazy Creek canoe chair	3.00
Aluminum paddle (free w/canoe rental)	2.00
Life jacket ( free w/canoe rental)	2.00
Rod holder	2.00
Leech locker	2.00

### Additional Items Available

Tents (2 to 6 person capacity), camp pillow, cot, camp chairs, kitchen tarp, rain fly, screen tent, cook kit with utensils, griddle, fry-pan, bear rope with pulley, folding saw, axe, 1-gallon water carrier, camp shovel/trowel, rain poncho, fish cleaning board, fish net, anchor bag, canoe seat cushion—please call or check our website for pricing.

## Camping Gear Rental Discounts

Deduct 20% if your trip starts before June 13 or after Aug. 14 (no other discounts apply), 5% if you join our CBO Conservation Club or 10% if you are a CBO repeat guest with Conservation Club.

## Sample Menu Selections

### EXPEDITION MENU

**BREAKFAST** Fresh Eggs, Tex-Mex Eggs, Scrambled Eggs, Ham & Cheese Omelette, Peasant Omelette, Sausage & Cheese Omelette, Potato & Cheese Omelette, Spicy Cheese Omelette, French Toast, Roast Beef Hash, Cinnamon Rolls, Coffee Cake, Buttermilk Pancakes, Blueberry Pancakes, Apple-Cinnamon Pancakes, Honey-Dutch Pancakes, Raspberry Granola, Strawberry Granola, Blueberry Granola, Whole-Grain Cereal, Maple-Almond Granola, Instant Oatmeal (Regular/Spice/Fruit & Cream), English Muffins, Breakfast Bars, Fresh Thick-Sliced Bacon, Sausage Patty, Sliced Ham

**SOUPS/STEWES** Chicken Gumbo Soup, Fish Chowder, Alpine Minestrone Soup, Potato & Cheddar Soup, Chili, Split Pea Soup, Seafood Chowder, Garden Vegetable Stew, Mulligan Stew, Hillbilly Stew, Ramen Noodle Soups, Cup-A-Soup

**QUICK LUNCHEAS** Fresh Sliced Lunchmeats, Fresh Salami, Fresh Summer Sausage, Peanut Butter & Jelly, Cheese Slices, Cheese Spread, Tuna Salad, Chicken Salad, Pasta Salad, Whitefish & Crab Salad, Granola Bars, Energy Bars, Beef Jerky, Beef & Cheese Sticks

**BEEF** Fresh Premium-Cut Ribeye Steak, Fresh Bacon-Wrapped Hamburger, Beef Rotini, Beef Teriyaki, Beef Stroganoff, Spaghetti With Meat Sauce, Chili, Mexican Rice With Beef, Tamale Pie, Thai Beef W/Broccoli

**POULTRY** Fresh Chicken Breast, Chicken Primavera, Chicken & Noodles, BBQ Chicken, Sierra Chicken, Kung Fu Chicken, Kung Pao Chicken, Chicken & Rice, Chicken with Mashed Potatoes, Teriyaki Chicken, Mexican Rice & Chicken, Almond Chicken, Chicken Rotelle, Polynesian Chicken & Rice, Oriental Chicken & Vegetables, Wild Tyme Turkey, Fettuccini Alfredo with Turkey, Turkey Supreme, Turkey with Mashed Potatoes

**PORK** Fresh 10 oz. Ham Steak, Fresh Smoked Sausage, Sweet & Sour Pork

**SEAFOOD** Shrimp Alfredo, Shrimp Newburg

**MEATLESS** Three Cheese Lasagna, Zucchini Lasagna, Chili, Spaghetti Marinara with Mushrooms, Asian Fried Rice, Fettuccini Primavera, Pasta Primavera, Shanghai Vegetables & Rice, Bountiful Vegetable Pasta, Black Bean Tamale Pie, Macaroni & Cheese, Curried Rice, Cheese Enchilada

**VEGETABLES** Corn, Carrots, Green Beans, Green Beans Almandine, Peas, Peas & Carrots, Sicilian Vegetables, Southwestern Corn, Monterey Pintos & Rice, Brown Rice, Red Beans & Rice, Black Beans & Rice, Fried Rice, Three Rice Blend, Wild Rice Pilaf, Curried Rice, Mac & Cheese, Garlic Mashed Potatoes, Au Gratin Potatoes, Hash Browns, Hash Browns O'Brien, Vegetable Pasta, Buttered Noodles

**DESSERTS & SNACKS** Fruit Cocktail, Chocolate Pudding, Mocha Mousse Pie, Rice Pudding with Raisins, Fruit Cobbler, Apple Cobbler, Three Berry Cobbler, Blueberry Cobbler, Raspberry Cobbler, Gingerbread, Bishop's Bread, Lemon Pie, Apple Brown Betty, Applesauce, Chocolate Peanut Butter Pie, Strawberry Cheesecake, Blueberry Cheesecake, Blackberry Cheesecake, Apple Muffins, Blueberry Muffins, Chocolate Cake, Apple Almond Crisp, Apple D-Lite, Cookies, Dried Fruits, Nut Gorp, Fruit Gorp, Raisins, Hard Candy, Mini Candy Bars

### ULTRA-LIGHT MENU

**BREAKFAST** Fresh Eggs, Scrambled Eggs, Spicy Cheese Omelette, Hash Browns, French Toast, Buttermilk Pancakes, Blueberry Pancakes, Blueberry Granola, Maple-Almond Granola, Instant Oatmeal (Regular/Spice/Fruit &

Cream), English Muffins, Breakfast Bars, Fresh Thick-Sliced Bacon, Sausage Patty, Sliced Ham

**QUICK LUNCHEAS** Fresh Sliced Lunchmeats, Fresh Salami, Fresh Summer Sausage, Peanut Butter & Jelly, Cheese Slices, Cheese Spread, Chili-Mac, Granola Bars, Energy Bars, Beef Jerky, Beef & Cheese Sticks, Ramen Noodle Soups

**DINNER ENTREES** Fresh 8 oz. Sirloin Steak with Garlic Mashed Potatoes, Fresh Bacon-Wrapped Hamburger with Macaroni & Cheese, Fresh 10 oz. Ham Steak with Au Gratin Potatoes, Beef Stroganoff, Spaghetti with Meat Sauce, Mexican Rice with Beef, Chicken & Rice, Chicken with Mashed Potatoes, Fettuccini Alfredo with Turkey, Turkey Supreme

**VEGETABLES** Corn, Carrots, Green Beans, Peas, Peas & Carrots, Sicilian Vegetables, Southwestern Corn

**DESSERTS & SNACKS** Fruit Cocktail, Chocolate Pudding, Mocha Mousse Pie, Rice Pudding with Raisins, Fruit Cobbler, Apple Cobbler, Raspberry Cobbler, Lemon Pie, Apple Brown Betty, Applesauce, Chocolate Peanut Butter Pie, Apple D-Lite, Nut Gorp, Fruit Gorp, Cookies, Hard Candy



# FRIENDLY BASE ON Moose Lake.

## Towboat Services

Our towboats will transport you and your gear through the motorized zone of the Moose Lake chain, saving you up to a full day's paddling. Tow charges (except to Prairie Portage) are subject to US Forest Service user fees of 3%. Rates are per person, one way. Two person minimum.

<b>DESTINATION</b> Landing/ Entry Point	With Full Outfitting	With Canoe Rental	Other
Ensign Lake	\$18	21	24
Birch Lake	\$20	23	26
Prairie Portage	\$20	23	26
Lincoln Island*	\$70	80	80
Back Bay*	\$80	90	90

\*includes Prairie Portage Truck Fees



## Transport Services

### AIRPORTS

Ely \$36 (free with complete outfitting)  
 Hibbing \$190 per van up to 9 people, one way  
 Duluth \$255 per van up to 9 people, one way



Other Destinations  
Available ...  
Please Call for Quote

<b>Landing/ Entry Point</b>	<b>With Full Outfitting</b>	<b>With Canoe Rental</b>	<b>Other</b>
#30 Lake One	Free	\$17	\$22
#27 Snowbank	Free	\$22	\$33
#29 Ojibway	Free	\$11	\$17
#26 Wood	Free	\$11	\$17
#24 Fall	Free	\$28	\$33
#31 Farm/Garden	Free	\$28	\$33
Seaplane base	Free	\$28	\$33
#33 Little Gabbro	\$33	\$44	\$50
#32 S Kawishiwi River	\$33	\$44	\$50
#23 Mudro	\$50	\$66	\$72
#16 Nina Moose	\$61	\$77	\$83
#14 Indian Sioux	\$66	\$83	\$88
#35 Isabella	\$50	\$66	\$72
#37 Kawishiwi Lake	\$66	\$83	\$135
Crane Lake	\$110	\$127	\$149

# SPECIAL SERVICES

*CBO will make you feel right at home  
with a clean, private room and a delicious meal  
in an extra-friendly casual setting*

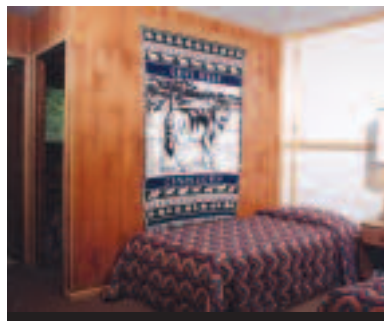
## Cookshack

Be sure to visit our lakeside Cookshack which offers up delicious sit-down meals.

Take advantage of our “cook’s choice” all-you-can-eat breakfasts—such as plate-sized buttermilk pancakes, hearty stacks of French toast, or our expansive smorgasbord style breakfast buffet.

For dinner, you can’t beat our CBO house specialty—a choice of tender, juicy grilled steaks with all the trimmings! We also have a nice variety of sandwich platters, including beef burgers, chicken breast and vegetarian selections. (Advance notice for dinner is appreciated.)

Please check our website or call for menu details and prices.



## Store in the Woods

When you arrive at CBO, we’ll greet you at our lakeside “Store in the Woods”. This is where we check you in, issue BWCAW travel permits and Minnesota fishing licenses, provide required orientation on traveling in Quetico Provincial Park and the Boundary Waters Canoe Area Wilderness and help you with all your trip details.

The store is stocked full of maps, bait, fishing poles and tackle, snacks and trail foods, a wide variety of Northwoods souvenirs, tee-shirts and sweatshirts, and miscellaneous camping supplies to round out your kit.

## Liars’ Den

Our log cabin “Liars’ Den” is open 24/7. It’s a friendly gathering place to pour over your route maps, share fishing stories, play cards, or just hang out with fellow canoe-trippers. Coin-op soft drinks and microwave available.

## Overnight Lodging

Relax and enjoy the peace and quiet of the wilderness in clean, comfortable, private lodging before and after your canoe trip... just steps away from beautiful Moose Lake. Quiet time is observed at 10 p.m.

CBO’s motel rooms each comfortably accommodate a party of four with combinations of double and twin beds in two separate sleeping areas. Each motel room has a private bathroom with shower; bath soap and towels are provided.

CBO offers private bunkhouse rooms or ridge-top Yurts which have bunk beds and pillows to accommodate your crew from one to 18 persons per room. Sleeping bags are provided for parties with complete outfitting; other parties may use their own bags or rent some from us. Our centrally-located bathhouse with hot showers has separate men’s and ladies’ facilities. Bath soap and towels are furnished.

Rates	With Complete Outfitting	With Canoe Rental	Other
Motel room (double occupancy)	\$50	\$60	\$70
Each additional person	\$10	\$10	\$15
Bunkhouse/Yurt (per person)	\$12	\$14	\$17

# ADDITIONAL INFORMATION

## Reservations, Payments and Cancellations

**DEPOSITS** A \$50 per person deposit for packages, \$100 total for partial outfitting, is required to confirm your canoe trip plans.

Plus for each permit your group will require, CBO collects \$12 for the BWCAW Reservation Fee and \$32 for your BWCAW Usage Fee deposit. In addition, CBO will collect a \$10 acquisition fee per permit.

If you are scheduled for a Quetico trip, the \$10 acquisition fee will also apply and CBO will require the reservation be made with your credit card (Visa or MasterCard). The Quetico Park will charge your credit card in the amount of \$112 in Canadian Funds (\$12 reservation fee and \$100 as a camping fee deposit).

*Rates subject to change without notice.*

**CANCELLATIONS** If your trip must be cancelled, your outfitting deposit, less \$50 service fee, is refundable up to 30 days prior to the start of your trip. There are no refunds on permit reservation fees or permit cancellation fees AND no refunds within 30 days of your trip.

**PAYMENT** Final payment may be made by cash, travelers checks, MasterCard, VISA, Discover, or an organization check. Personal Checks can only be accepted up to 30 days in advance of the trip.

**EARLY RETURN** If you return from your canoe trip early, we will refund the equipment rental amount for days of early return, less one day. There are no refunds on food. Lodging arranged in advance will be refunded only if the accommodations can be rented to another party.

## BWCAW-Quetico Permit Information

- An entry permit is required for each travel group; group size is 9 persons or less for each permit.
- Permit quotas have been set in both wilderness areas to minimize impact on the area, so securing permits as early as possible is critical to getting your first choice date/entry point.
- Each permit lists party leaders, a specific entry date, and a specific entry point.
- BWCAW permits are issued by lottery in mid-January; thereafter, permits are available on a first-come, first-served basis.
- Quetico permits become available five (5) months (or less) in advance of the desired entry date.

**BWCAW PERMIT COSTS\*** The reservation fee for each BWCAW permit is \$12. In addition, the BWCAW camping fee is \$16 per adult and \$8 per youth under age 18 (this is a flat fee; not per night or per day). CBO collects the \$12 USFS reservation fee and \$32 camping fee deposit towards the total camping fees along with a \$10 administration fee for each permit requested. The \$12 reservation fee is non-refundable; the camping fee may be refunded if the cancellation is received on a timely basis.

**QUETICO PERMIT COSTS\*** The reservation fee for each Quetico permit is \$12. In addition, Quetico charges a per night camping fee of \$20 (Canadian Funds) per adult and \$8 (Canadian Funds) for youth under 18 – plus tax. In addition to your permit reservation fee of \$12, Quetico will also collect a \$100 deposit towards your camping fees at the time of reservation. Persons entering Quetico must get their customs/immigration clearance in advance by mail, known as a Remote Area Border Crossing (RABC-CanPass) Permit. The fee is \$30 (Canadian Funds) per adult or per family (including dependents under age 22). We have all the forms available and will mail them with your reservation confirmation. The RABC application must be done well in advance of your trip – at least 30 days – to ensure having written approval before your canoe trip. Parties returning from Quetico will need a valid passport or equivalent to re-enter the USA.

*\*BWCAW and Quetico fees in this brochure were accurate as of the printing date, but are subject to change without notice.*

## Fishing Licenses

**MINNESOTA FISHING LICENSES** may be purchased at our Moose Lake base. The rates are:

Resident – individual	\$18.00
Resident – husband and wife	\$26.00
Nonresident – individual	\$40.50
Nonresident – husband and wife (14 day)	\$41.50
Nonresident – family	\$53.50
Nonresident – individual (7 day)	\$29.50
Nonresident – individual (3 day)	\$25.00

**CANADIAN FISHING LICENSES** may be purchased at the Ranger Station with VISA, MasterCard, or cash. Fees are in Canadian funds (plus tax).

Nonresident rates are:	
Individual (seasonal)	\$62.50
Individual – conservation (seasonal)	\$38.00
Individual (7 day)	\$40.00
Individual – conservation (7 day)	\$24.00

*Fishing licenses quoted in this brochure were accurate as of the printing date, but are subject to change without notice.*

Printed in U.S.A.



14635 Canadian Border Road, Ely, MN 55731  
 Phone: 1-800-247-7530  
 Website: [www.canoeetrip.com](http://www.canoeetrip.com)  
 E-mail: [cbo@canoeetrip.com](mailto:cbo@canoeetrip.com)